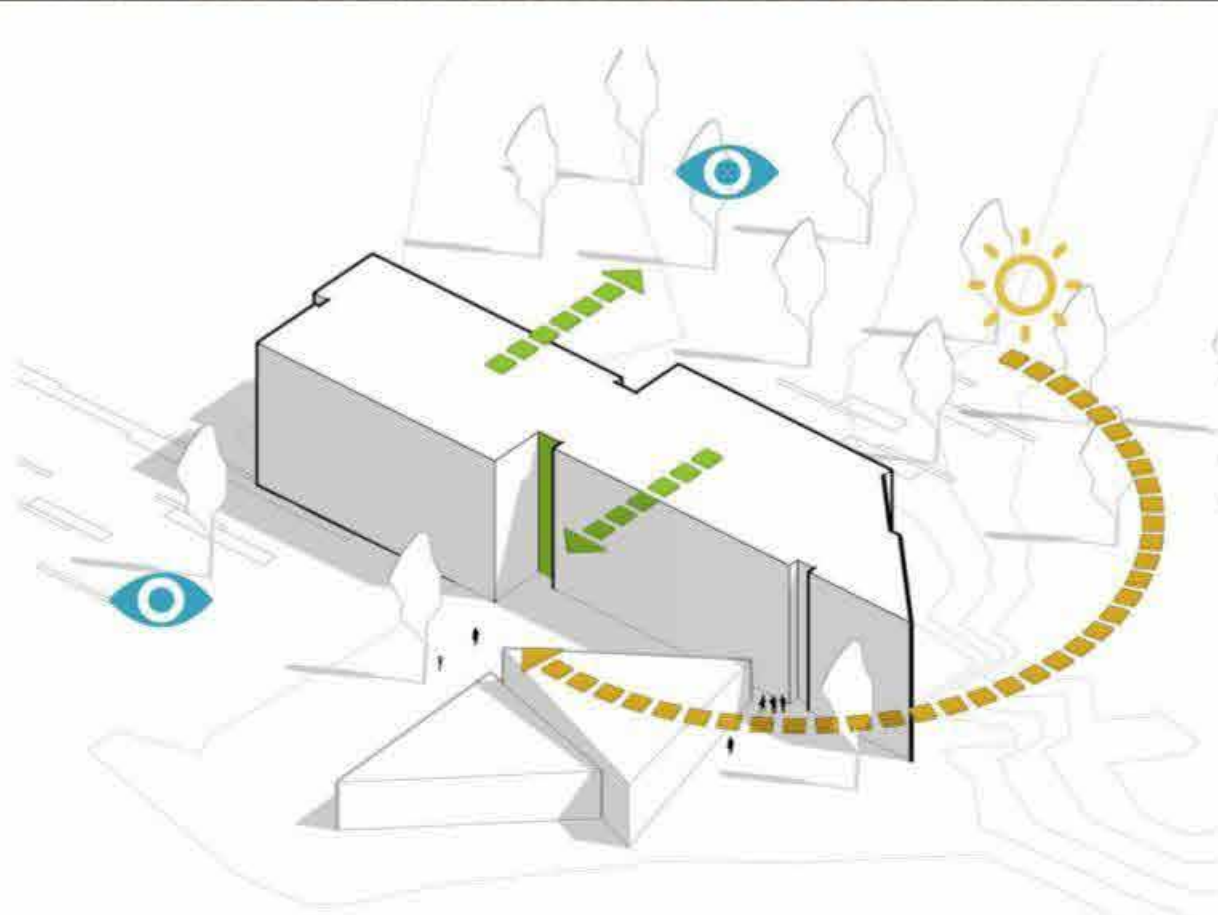
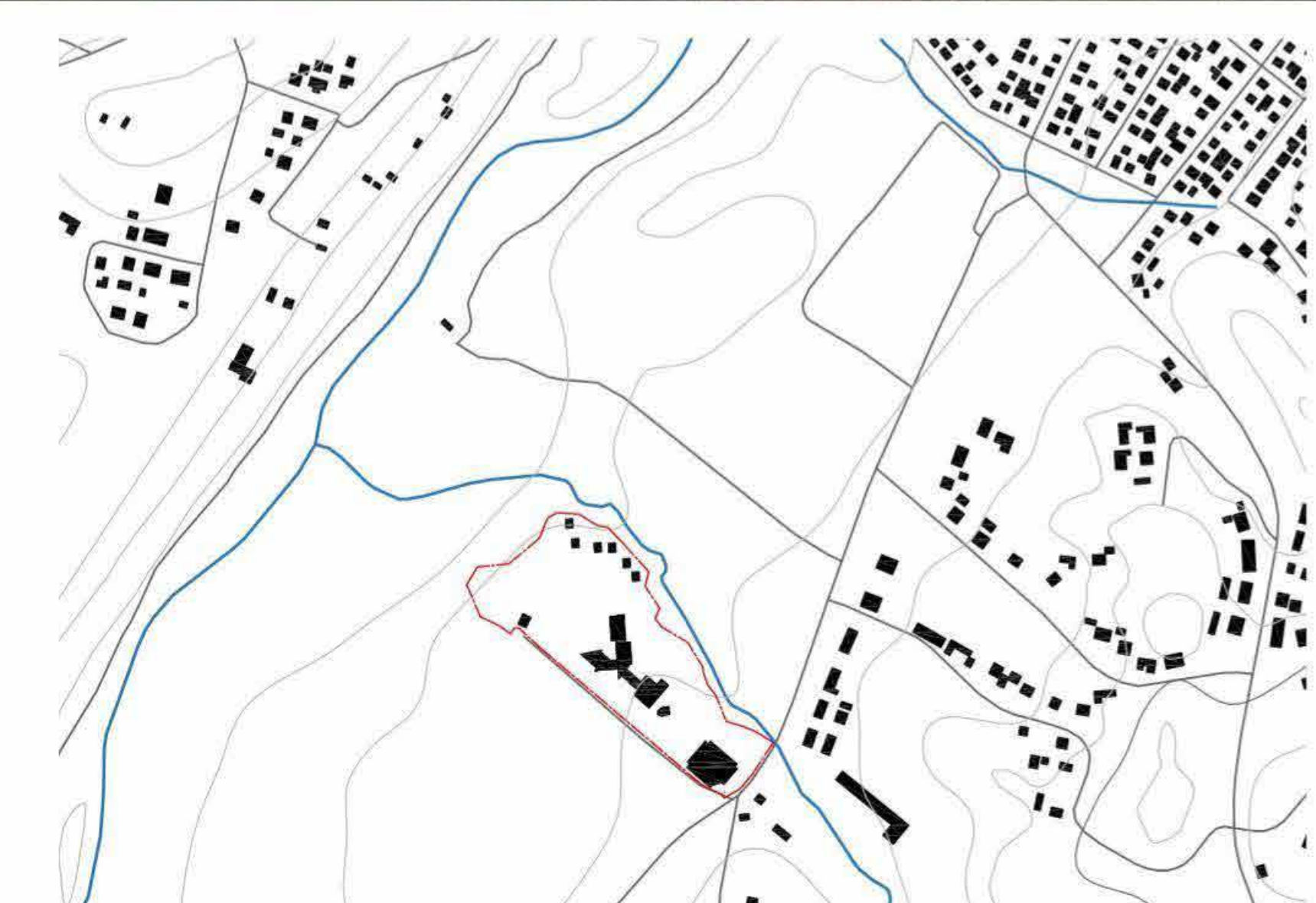
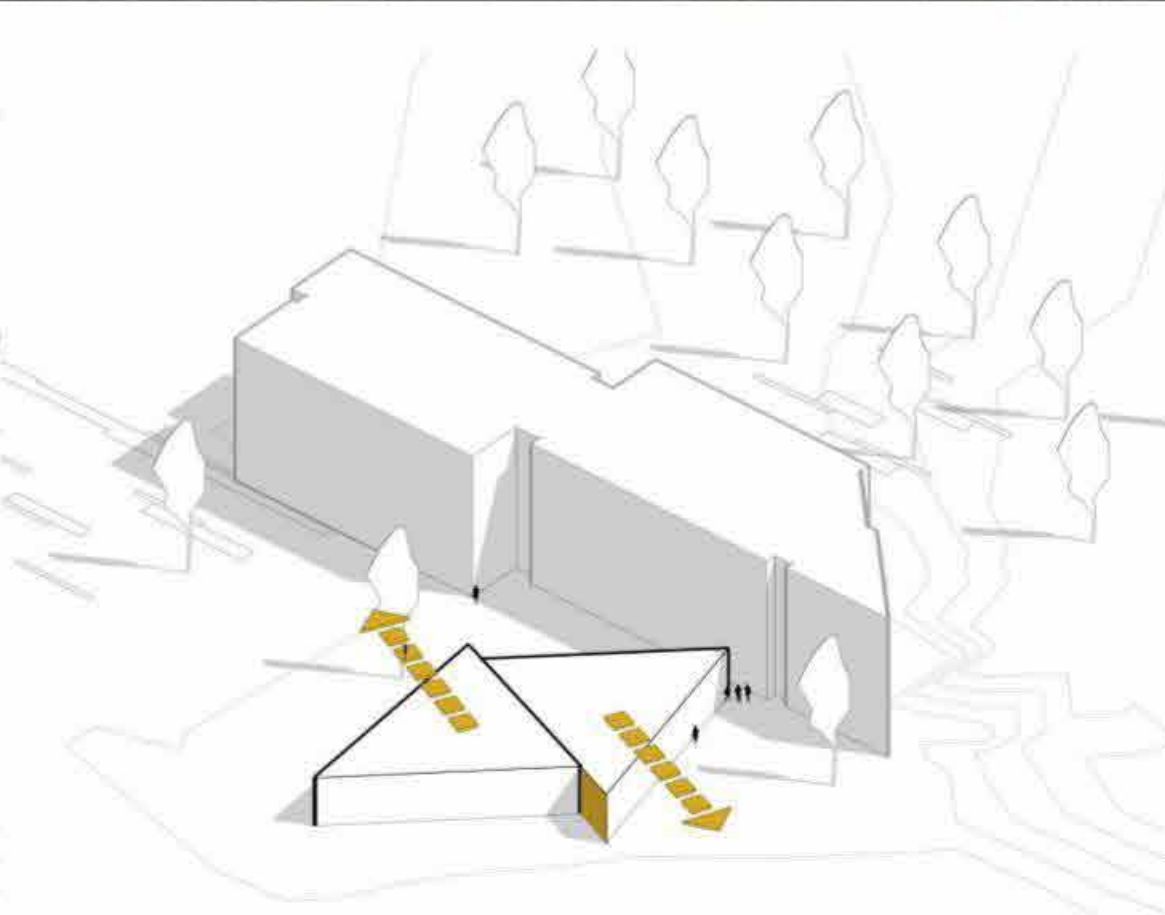


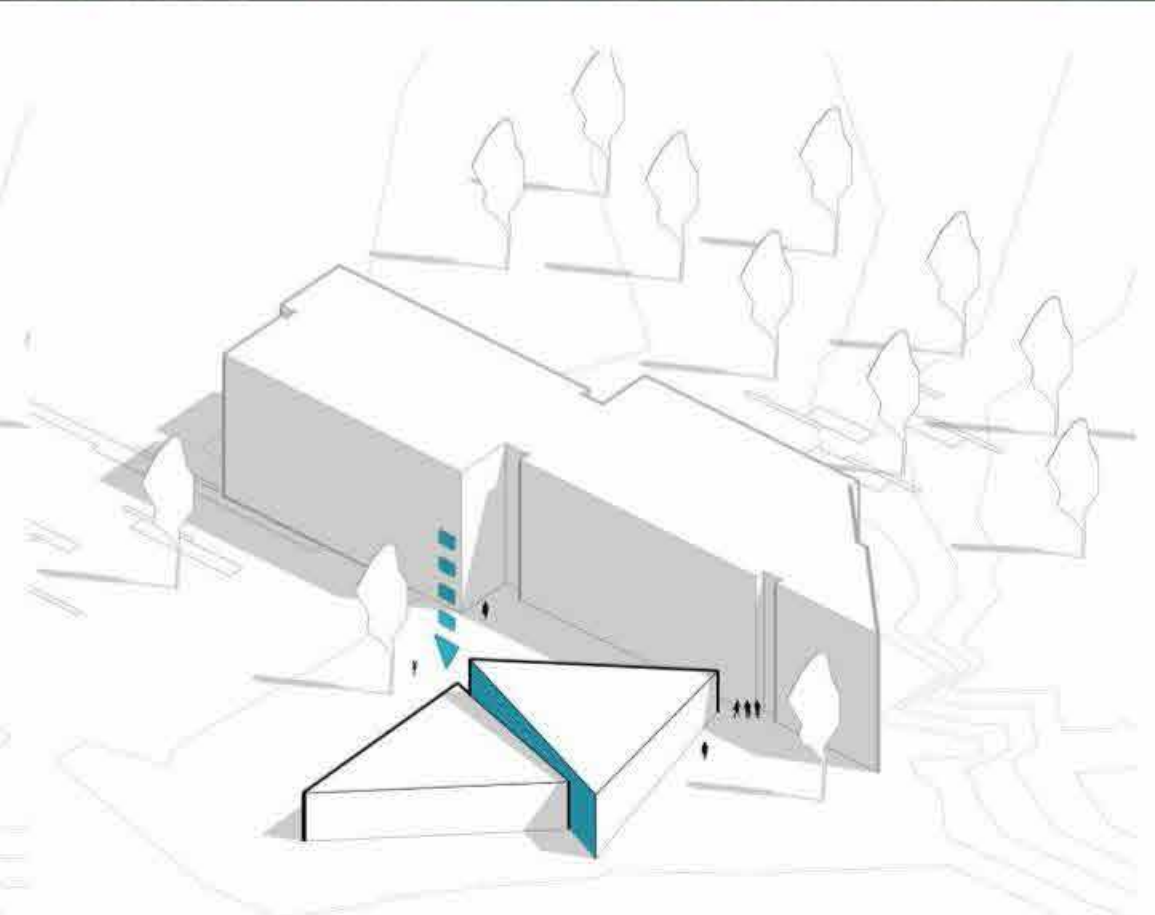
# CLOSED DESIGN CONTEST FOR THE DEVELOPMENT OF SPA VILNIUS ANYKŠČIAI HOTEL AND SPA CENTER, VILNIAUS G. 80 IN ANYKŠČIAI



ARCHITECTURAL IDEA TRANSLATES THROUGH BUILDING'S FORM. SHARP EDGES ALL OVER THE BUILDING, IT IS CONTINUATION OF EXISTING SPA BUILDINGS IDEA TO MAINTAIN FEELING OF TWO BUILDING AS ONE COMPLEX. HOTEL PART WAS SHIFTED TO AVOID HAVING LONG CORRIDOR AND TO CREATE TRANSPARENT GAP FOR VISUAL SEPARATION.



SPA CENTER IDEA IS TRIANGLES AND SHARP FORMS WHICH REPRESENTS MAJORITY OF THE SURROUNDING NATURE, TREES. TRIANGLES ARE SHIFTED APART TO EXPRESS FUNCTIONAL SEPARATION AND VISUAL AS WELL.



SPA CENTER TRIANGLES ALSO HAVE HEIGHT DIFFERENCES WHICH ALLOWS TO HAVE MORE SUN FROM THE WEST AND EXCITING VIEWS FROM THE INTERIOR. ALSO, HEIGHT VARIATION ADDS MORE DYNAMICS TO THE BUILDING.







- 1. EXISTING BUILDING TO BE RENOVATED
- 2. NEW DESIGNED SPA COMPLEX
- 3. NEW DESIGNED CAR PARKING STRUCTURE
- 4. PRIVATE HOLIDAY HOMES
- 5. BICYCLE STORAGE
- 6. SMOKING SHELTER
- 7. SAUNA
- 8. TERRACE / OUTDOOR LOUNGE
- 9. ALLEY
- 10. PARKING PLACES (TEMPORARY PARKING)
- 11. PARKING PLACES (FOR PRIVATE HOLIDAY HOMES)
- 12. CHILDREN PLAYGROUND
- 13. COVERED WASTE CONTAINERS

- SITE BOUNDARY
- PEDESTRIAN PATH
- BICYCLE PATH
- CAR DRIVEWAY
- ▲ ENTRY TO THE BUILDING
- ▲ ENTRY INTO THE TERRITORY
- ▲ ENTRY TO THE CAR PARKING STRUCTURE
- BREAKSTONE
- CONCRETE BLOCKS
- PATTERNED SITE BLOCKS WITH GRASS INSERTS
- NEW TREES TO PLANT
- LANES OF GREENERY

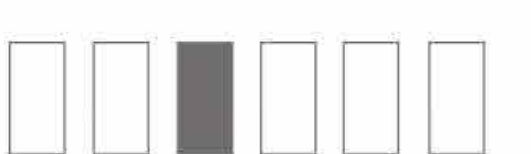
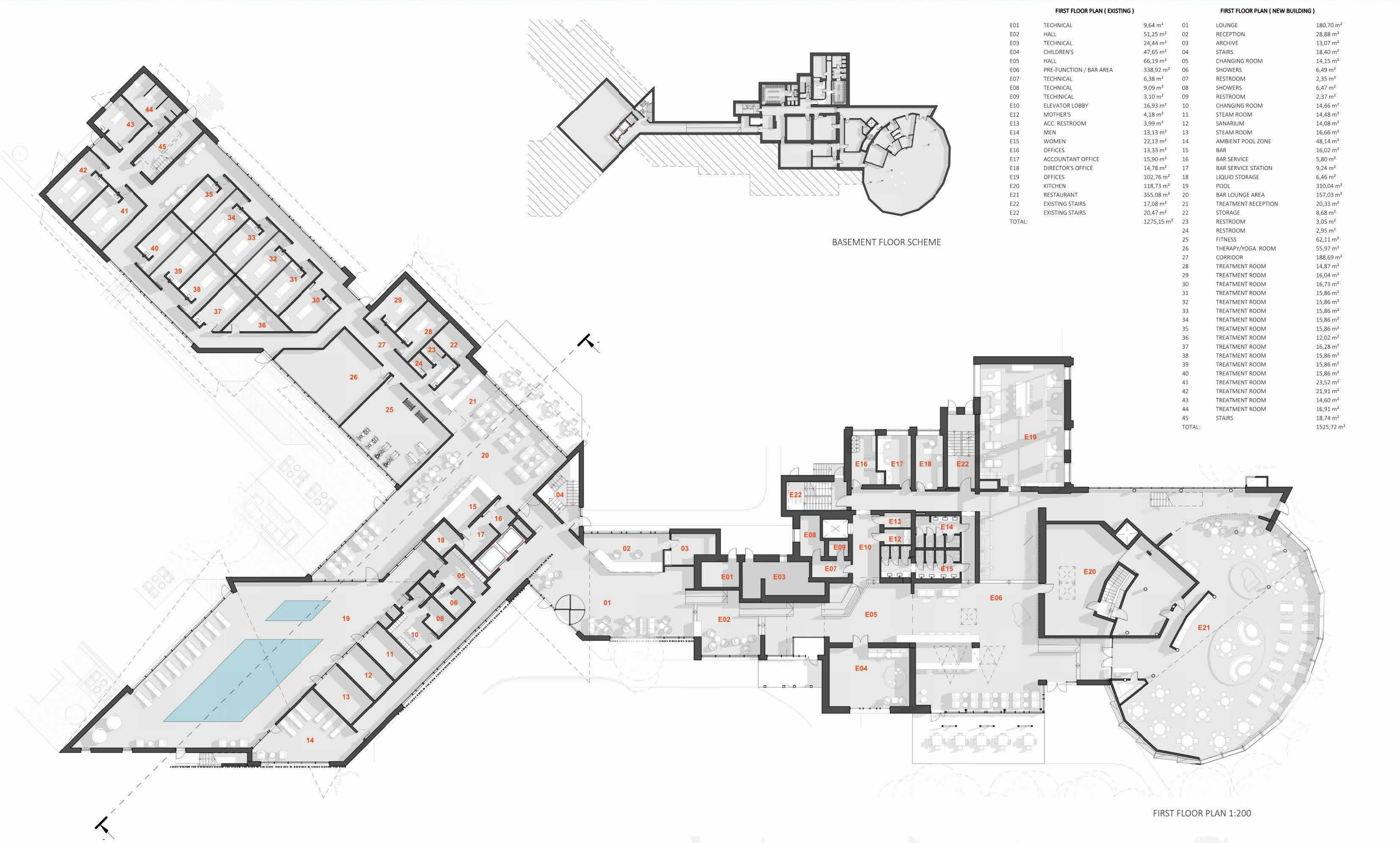
SITE PLAN 1:200



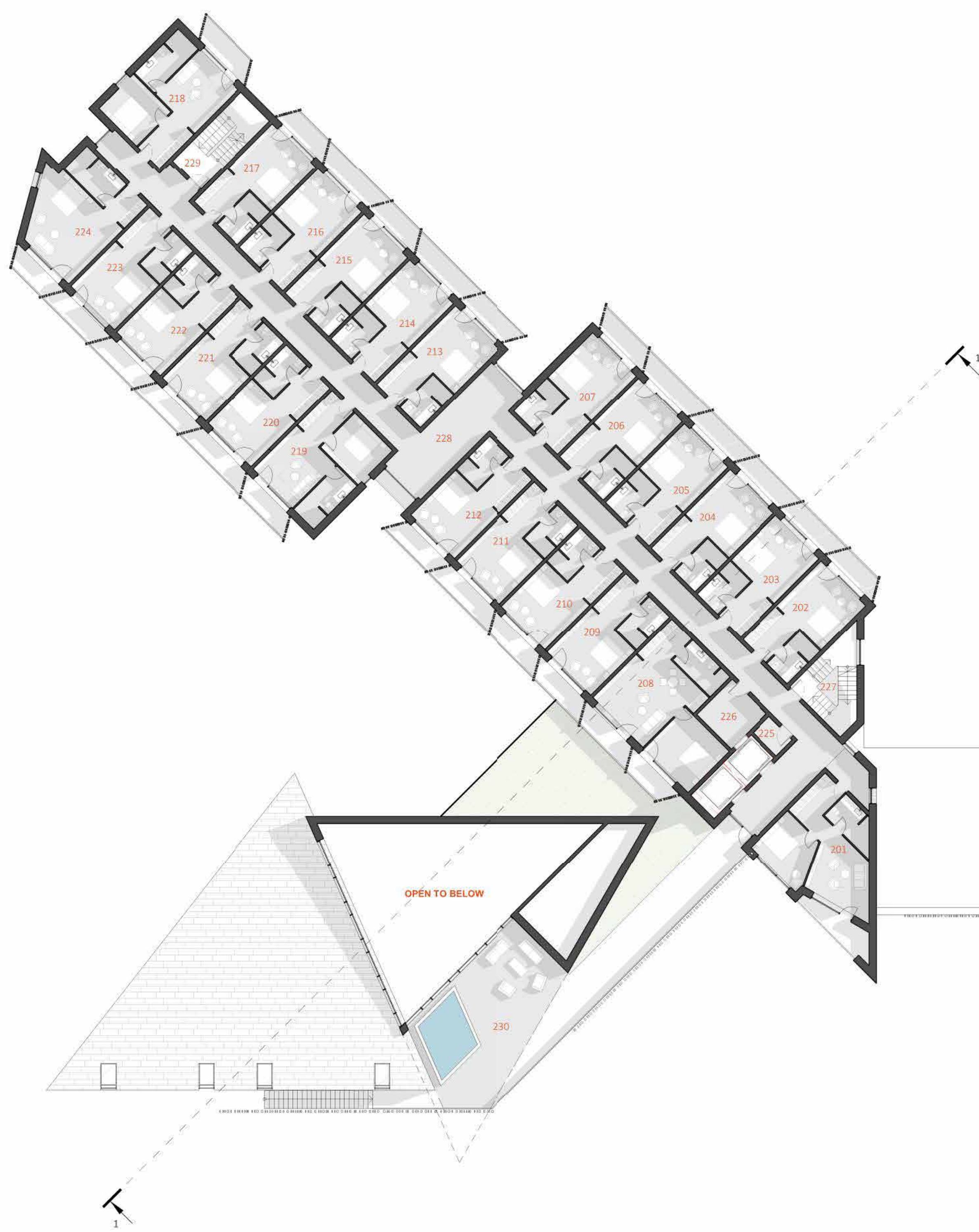
WEST ELEVATION 1:200











**SECOND FLOOR PLAN ( EXISTING )**

E201	CONFERENCE ROOM	58,51 m <sup>2</sup>
E202	CONFERENCE ROOM	100,09 m <sup>2</sup>
E203	HALL	116,39 m <sup>2</sup>
E204	EXISTING GUESTROOM	48,13 m <sup>2</sup>
E204	EXISTING GUESTROOM	36,48 m <sup>2</sup>
E204	EXISTING GUESTROOM	48,38 m <sup>2</sup>
E204	EXISTING GUESTROOM	27,16 m <sup>2</sup>
E204	EXISTING GUESTROOM	18,67 m <sup>2</sup>
E204	EXISTING GUESTROOM	17,72 m <sup>2</sup>
E204	EXISTING GUESTROOM	17,75 m <sup>2</sup>
E204	EXISTING GUESTROOM	17,47 m <sup>2</sup>
E204	EXISTING GUESTROOM	29,77 m <sup>2</sup>
E204	EXISTING GUESTROOM	14,79 m <sup>2</sup>
E204	EXISTING GUESTROOM	49,27 m <sup>2</sup>
E204	EXISTING GUESTROOM	40,30 m <sup>2</sup>
E205	CORRIDOR	50,25 m <sup>2</sup>
E206	STAIRS	17,08 m <sup>2</sup>
E206	STAIRS	20,47 m <sup>2</sup>
E207	HOUSE KEEPING	8,84 m <sup>2</sup>
E208	UTILITY ROOM	7,92 m <sup>2</sup>
E208	UTILITY ROOM	3,08 m <sup>2</sup>
TOTAL:		748,53 m <sup>2</sup>

**SECOND FLOOR PLAN ( NEW BUILDING )**

201	FAMILY ROOM	42,32 m <sup>2</sup>
202	STANDARD ROOM	29,15 m <sup>2</sup>
203	STANDARD ROOM	28,03 m <sup>2</sup>
204	STANDARD ROOM	28,41 m <sup>2</sup>
205	STANDARD ROOM	28,41 m <sup>2</sup>
206	STANDARD ROOM	28,41 m <sup>2</sup>
207	STANDARD ROOM	28,41 m <sup>2</sup>
208	FAMILY ROOM	50,16 m <sup>2</sup>
209	STANDARD ROOM	28,41 m <sup>2</sup>
210	STANDARD ROOM	28,41 m <sup>2</sup>
211	STANDARD ROOM	28,41 m <sup>2</sup>
212	STANDARD ROOM	28,41 m <sup>2</sup>
213	STANDARD ROOM	28,03 m <sup>2</sup>
214	STANDARD ROOM	28,03 m <sup>2</sup>
215	STANDARD ROOM	28,03 m <sup>2</sup>
216	STANDARD ROOM	28,03 m <sup>2</sup>
217	STANDARD ROOM	28,03 m <sup>2</sup>
218	DELUXE ROOM	39,12 m <sup>2</sup>
219	DELUXE ROOM	39,22 m <sup>2</sup>
220	STANDARD ROOM	28,41 m <sup>2</sup>
221	STANDARD ROOM	28,41 m <sup>2</sup>
222	STANDARD ROOM	28,41 m <sup>2</sup>
223	STANDARD ROOM	28,03 m <sup>2</sup>
224	DELUXE ROOM	38,65 m <sup>2</sup>
225	ELECTRICAL	3,06 m <sup>2</sup>
226	HOUSE KEEPING	9,98 m <sup>2</sup>
227	STAIRS	17,58 m <sup>2</sup>
228	STAIRS	158,81 m <sup>2</sup>
229	CORRIDOR	16,16 m <sup>2</sup>
230	OPEN TERRACE	52,13 m <sup>2</sup>
TOTAL:		1005,07 m <sup>2</sup>



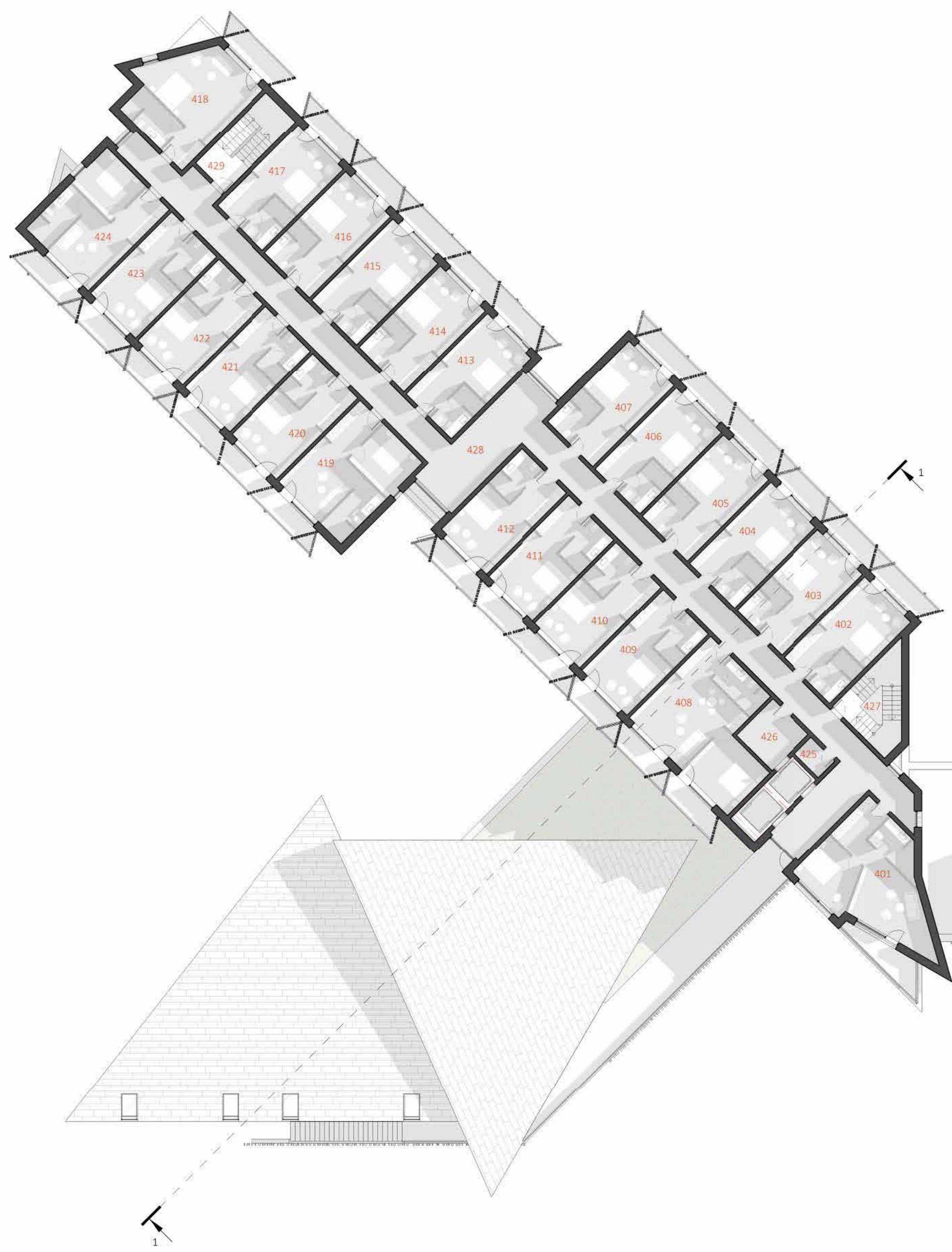
SECOND FLOOR PLAN 1:200



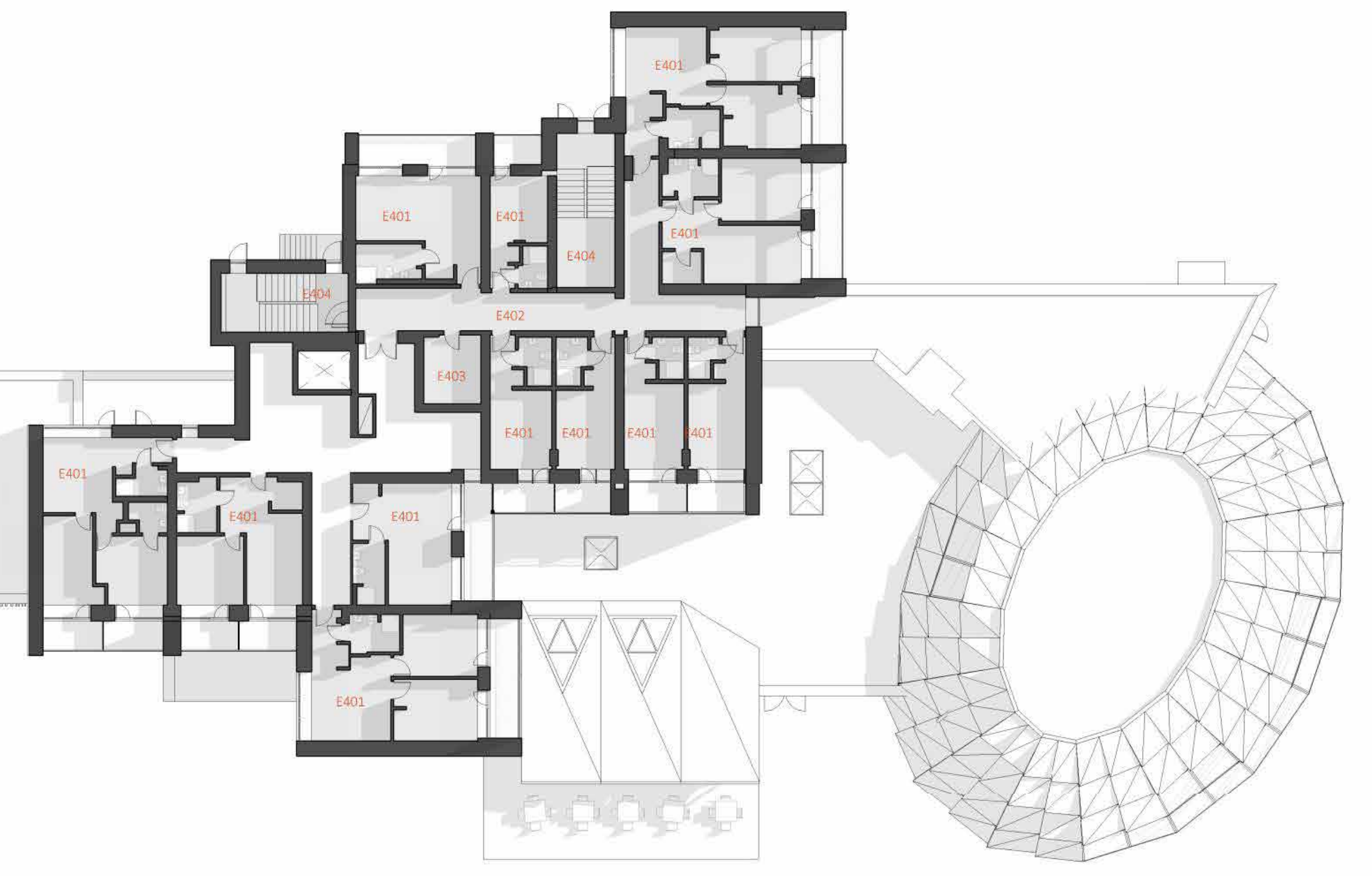
EAST ELEVATION 1:200







TYPICAL FLOOR PLAN ( EXISTING )		TYPICAL FLOOR PLAN ( NEW BUILDING )			
E401	EXISTING GUESTROOM	48.13 m <sup>2</sup>	401	FAMILY ROOM	46.29 m <sup>2</sup>
E401	EXISTING GUESTROOM	36.48 m <sup>2</sup>	402	STANDARD ROOM	28.77 m <sup>2</sup>
E401	EXISTING GUESTROOM	48.54 m <sup>2</sup>	403	STANDARD ROOM	28.03 m <sup>2</sup>
E401	EXISTING GUESTROOM	27.16 m <sup>2</sup>	404	STANDARD ROOM	28.03 m <sup>2</sup>
E401	EXISTING GUESTROOM	18.67 m <sup>2</sup>	405	STANDARD ROOM	28.03 m <sup>2</sup>
E401	EXISTING GUESTROOM	17.72 m <sup>2</sup>	406	STANDARD ROOM	28.03 m <sup>2</sup>
E401	EXISTING GUESTROOM	17.75 m <sup>2</sup>	407	STANDARD ROOM	28.03 m <sup>2</sup>
E401	EXISTING GUESTROOM	17.47 m <sup>2</sup>	408	FAMILY ROOM	49.79 m <sup>2</sup>
E401	EXISTING GUESTROOM	40.30 m <sup>2</sup>	409	STANDARD ROOM	28.03 m <sup>2</sup>
E401	EXISTING GUESTROOM	49.27 m <sup>2</sup>	410	STANDARD ROOM	28.03 m <sup>2</sup>
E401	EXISTING GUESTROOM	14.79 m <sup>2</sup>	411	STANDARD ROOM	28.03 m <sup>2</sup>
E401	EXISTING GUESTROOM	29.77 m <sup>2</sup>	412	STANDARD ROOM	28.03 m <sup>2</sup>
E402	CORRIDOR	45.04 m <sup>2</sup>	413	STANDARD ROOM	28.03 m <sup>2</sup>
E403	HOUSE KEEPING	8.88 m <sup>2</sup>	414	STANDARD ROOM	28.03 m <sup>2</sup>
E404	STAIRS	17.08 m <sup>2</sup>	415	STANDARD ROOM	28.03 m <sup>2</sup>
E404	STAIRS	20.64 m <sup>2</sup>	416	STANDARD ROOM	28.03 m <sup>2</sup>
TOTAL:		457.67 m <sup>2</sup>	417	STANDARD ROOM	28.03 m <sup>2</sup>
			418	DELUXE ROOM	38.84 m <sup>2</sup>
			419	DELUXE ROOM	38.85 m <sup>2</sup>
			420	STANDARD ROOM	28.03 m <sup>2</sup>
			421	STANDARD ROOM	28.03 m <sup>2</sup>
			422	STANDARD ROOM	28.03 m <sup>2</sup>
			423	STANDARD ROOM	28.03 m <sup>2</sup>
			424	DELUXE ROOM	38.97 m <sup>2</sup>
			425	ELECTRICAL	3.06 m <sup>2</sup>
			426	HOUSE KEEPING	9.98 m <sup>2</sup>
			427	STAIRS	17.58 m <sup>2</sup>
			428	CORRIDOR	158.86 m <sup>2</sup>
			429	STAIRS	16.16 m <sup>2</sup>
			TOTAL:		951.75 m <sup>2</sup>



TYPICAL FLOOR PLAN 1:200



NORTH ELEVATION 1:200





